

AIM:

To develop a climate change mitigation and adaptation strategy that provides a just and equitable transition to net zero for all citizens in Swansea, creating a liveable future with nature rich environment and health & wellbeing for all at its heart.

OR

To provide a just and equitable transition to net zero for all citizens in Swansea, delivering healthy & sustainable communities through placemaking to ensure a liveable future with a nature rich environment and wellbeing for all at its heart.

OBJECTIVES:

- Develop a strategy that identifies key priorities for collaboration across the Swansea region, for both mitigation and adaptation
- Develop a pathway to Net Zero
- Develop mechanisms that will prevent 'Lock-In'
- Highlight key stakeholders in the identified priorities
- Understand other future opportunities
- Understand the cost of not adapting and mitigating and potential impact on Swansea region

SPECIFICATION:

Swansea Net Zero Signatories Group (SNZS) is looking to produce a climate change mitigation and adaptation strategy that shall:

AIM: To develop a climate change mitigation and adaptation strategy that provides a just and equitable transition to net zero for all citizens in Swansea, creating a liveable future with nature rich environment and health & wellbeing for all at its heart.

This will be achieved through the following:

- Understanding the current status of mitigation and adaptation in SNZS organisations
- Benchmarking best practice
- Undertaking workshops with citizens from across Swansea region
- Developing a strategy document for the Swansea region with key priorities outlined that will enable a full action plan to be developed by the Signatories

This project will focus on the geographic area within Swansea Council's footprint, divided into five different areas:

- Swansea East
- Swansea West
- Gower #1 – 5, 10, 6, 8 and 4 taking in rural Gower and the estuary
- Gower #2 - 11, 14, 13, 7, and 2 – north Swansea
- Gower #3 – 12, 1, 15, and 9 – more urban fringe

The successful bidder will need to produce a strategy, with key priorities, which supports the transition to net zero, creating a liveable future with nature rich environment and health & wellbeing for all at its heart.

Methodology

The suggested methodology includes:

1. Understanding the current status of mitigation and adaptation in SNZS organisations

Provide a summary of the current approach to climate change mitigation and adaptation of all SNZS members, and any other local work/groups that support this agenda. The information will be provided to the Consultant at the start of the contract.

- SNZS will supply any of the following 'owned' by their organisation, this includes but is not limited to:
 - Mitigation strategies/plans
 - Adaptation strategies/plans
 - Resilience and response plans for extreme weather events
 - Welsh Government Public Sector Carbon emissions reporting returns from 2019/20 onwards
 - Biodiversity/nature strategies/plans
 - Appropriate contacts to coordinate questions
 - Staff/public surveys
 - Other strategies/plans that may be linked/influence this strategy
 - Known work occurring at a Welsh Government level that may impact this strategy
 - Relevant third sector groups/initiatives
 - Planning approaches
- Mapping stakeholders and other key decision/change makers that will need to be involved in the workshops

2. Benchmarking best practice

- Review of mitigation and adaptation approaches

3. Undertaking workshops with citizens from across Swansea region

- Up to 2 workshops per area (total 10 workshops)
- One workshop with the whole PSB
- Up to four additional workshops with other key stakeholders from the SNZS e.g. Planners, Estates, Resilience etc.

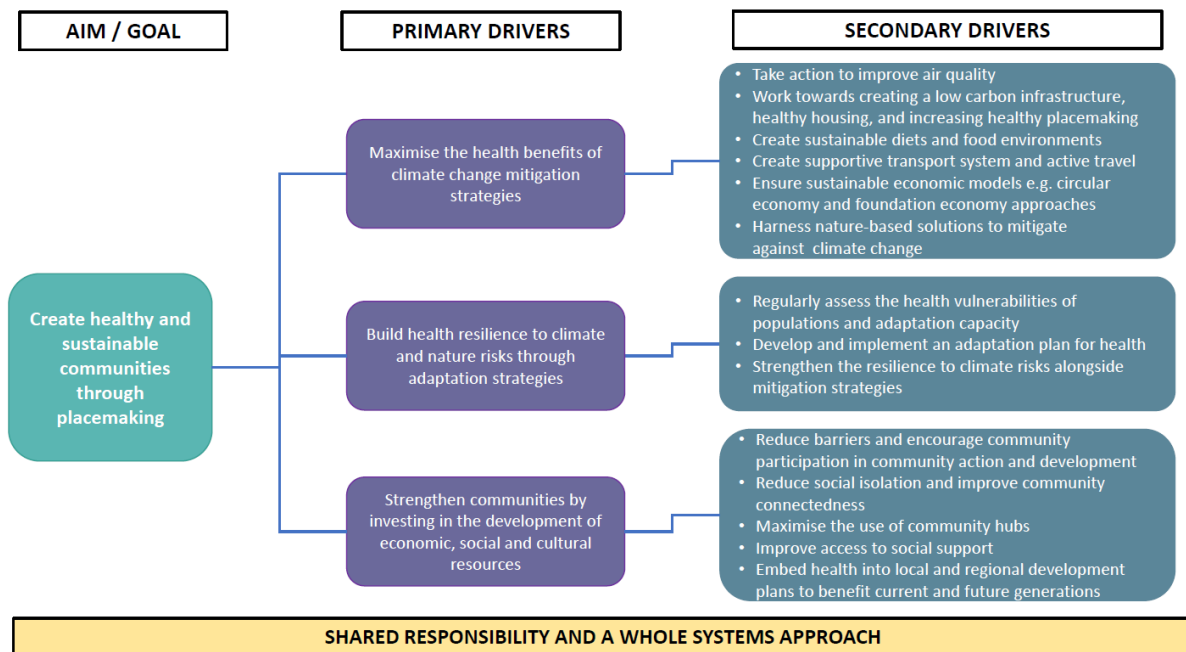
All workshops should engage and enable participants to be actively involved.

4. Developing a strategy document for the Swansea region with clear priorities that will aid the formulation of an action plan
 - A technical document and an easy read version
 - Recorded presentation that can be shared publically
 - Priorities to be clearly highlighted, with stakeholders identified
 - Identification of mechanisms/approaches that will prevent 'Lock-In'
 - Understand the cost of not adapting and mitigating and potential impact on Swansea region

All work associated with this contract must include:

1. Provision of Welsh language options for all workshops and resulting documents
2. Accessible
3. Consideration of both 2°C and 4°C scenarios, at a minimum
4. Key risks identified in CCRA3
5. 'Climate Change Committee Adaptation Monitoring Framework', including the 'Ten principles for good adaptation'
6. Consider cost and impact of 'do nothing'
7. To consider the following aspects, ensuring that 'Education & Skills', 'Circular Economy' and 'Health & Wellbeing' are considered within all:
 - a. Nature: Terrestrial (including on farmland), freshwater and marine habitats.
 - b. Working lands and seas: Agriculture, forestry and fisheries.
 - c. Food security: Domestic and imported food supply chains, as well as vulnerability of society to climate-related food disruption.
 - d. Water supply: Public water system which supplies households and businesses.
 - e. Energy: Key energy systems, the electricity system (transmission, distribution, and generation), gas networks and novel sources of energy supply (such as hydrogen) as they develop.
 - f. Telecoms & ICT: Communications and ICT infrastructure, including data centres, networks and other critical national infrastructure.
 - g. Transport: Road networks (both the national strategic road network and local roads), railways, ports and airports.
 - h. Towns and cities: The built environment at a settlement scale, covering flooding, coastal erosion and overheating risks.
 - i. Buildings: Individual buildings and their occupants, covering overheating and flooding.
 - j. Health: Public health, including mortality and morbidity, as well climate-sensitive vector-borne diseases and health care delivery.
 - k. Community preparedness and response: Preparedness of communities for climate impacts, including the ability to protect cultural heritage, and their ability to effectively respond when climate and weather-related disruptions occur.

- l. Business: Businesses and their function as a commercial entity, including risks to supply chains (both domestic and international), sites and assets, access to capital and productivity impacts.
 - m. Finance: Financial system, so that systemic risks from climate change are minimised and it can effectively support the economy in investing in necessary adaptation actions.
8. Five Ways of Working
9. Seven goals (see next page)
10. Population Health Strategy



Tentative Timeline

Activity	Date
Tender pre-evaluation consultation	Mid-October
Tender released	20 th November 2023
Close tender	11 th December 2023
Notify of interviews & schedule	18 th December 2023
Interviews	5 th January 2024
Award	12 th January 2024
Inception meeting (contract commences)	XX February 2024
Strategy delivered	XX October 2024

Fair Work	Low Carbon Society (decarbonisation)	Resource efficiency & circular economy	Fair & local procurement	Skills for nature	Local / foundational economy
Community energy	Healthy functioning ecosystems	Natural green space	Knowledge of nature	Water and air quality	A compassionate nation
An active nation	Placemaking	Preventative organisations and services	Educational opportunities for all	Citizen & community participation	Equality of health outcomes
People active in their communities	Connected and safe communities	Access to key well-being services	Community anchor institutions	Promoting and protecting culture, heritage & Welsh language	Culture, heritage & Welsh language as a mechanism for change
Participation in the arts, sports and recreation	Culture available to all	Valuing creativity	Fair, ethical and sustainable supply chains	Global citizenship and leadership	Solidarity and peace
Fair share of natural resources	Fair and ethical investment and divestment	Meaningful citizen and stakeholder engagement			